

Worksheet

1. Choose the correct answer.

1. How many types of historical sources are in history?

- 8
- 4
- 2
- 5

2. What **does not** belong to material sources?

- bones
- legends
- cities
- jewels

3. Where can we find historical sources?

- shop
- library
- gallery
- archive

4. What is the name of a **person** who works with history?

- vet
- historian
- cook
- soldier

5. What **does not** belong to audiovisual sources?

- photograph
- film
- map
- painting

2. Choose a word that **does not belong to the group**

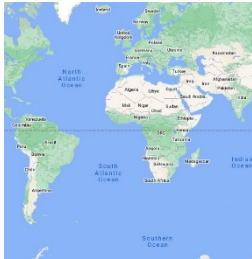
- chronology, genealogy, library, archeology, numismatics
- written, pictorial, oral, historian, material
- fairy tales, legends, buildings, mythology, proverbs
- library, archive, museum, maps, gallery
- bones, diary, letter, bulls, newspapers

3. Draw one picture of:

- a) a written source
- b) a material source
- c) an audiovisual source
- d) a pictorial source

4. What belongs together? Write the correct letter and number in the table below.

A



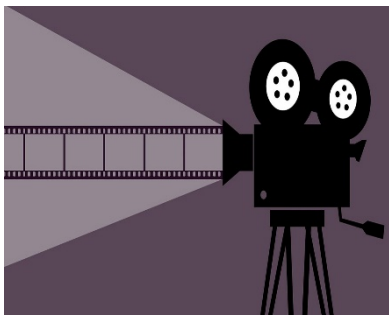
B



C



D



E



F



G



1. historian

2. film

3. newspapers

4. jewels

5. painting

6. library

7. map

Write the correct answers here ↓

| |
|-------------|
| Example: A7 |
| |
| |
| |
| |
| |
| |

Image sources in the worksheet:

<https://mindlrcareerlibrarynew.imgix.net/41E-Historian.png>

<https://thewell.unc.edu/files/2020/04/film1.jpg>

<https://img.amax.sk/images/sliders/bluebird-puzzle-the-vintage-library-jigsaw-puzzle-6000-pieces.79122-1.fs.jpg>

<https://www.historic-newspapers.co.uk/app/uploads/2019/07/Old-Newspapers.jpg>

<https://www.google.com/maps/d/thumbnail?mid=1WH3GS1dqinOY-HADNSBvSFqGwvw&hl=sk>

<https://i.pinimg.com/originals/db/00/ab/db00abcf6c5909bf4763f8c30fbe1701.jpg>